

APXBL06B_43-CT5 APXBL06B_43-AT5

Features

- 2 ports / 1 cross pol system in low band (698-960 MHz)
- 2 ports / 1 cross pol system in high band (1710-2690 MHz)
- Fixed Tilt
- Optional with Direct Pipe No Tilt mounting hardware (Model name suffix -AT5)



PRODUCT OVERVIEW	Frequency Range (MHz)	698-960	1710-2690
	Array	■ R1	■ Y1
	Connector	1-2	3-4
		4 PORTS	
	Polarization	XPOL	
	Azimuth Beamwidth (avg)	65°	65°
	Electrical Downtilt	5°	5°
	Dimensions	620 x 350 x 200 mm (24.4 x 13.8 x 7.9 in)	

ORDERING OPTIONS

Select from the following ordering options

ANTENNA MODEL NUMBER	CONFIGURATION	MOUNTING HARDWARE	MOUNTING PIPE DIAMETER	SHIPPING WEIGHT	MOUNTING HARDWARE WEIGHT
APXBL06B_43-CT5	Fixed Tilt	APM50-B1 Beam Tilt Kit Included	50-110 mm (2.0-4.3 in)	15.7 kg (34.6 lbs)	4.5 kg (9.9 lbs)
APXBL06B_43-AT5	Fixed Tilt	APM50-B1N Direct Pipe No Tilt Mounting Kit Included	50-110 mm (2.0-4.3 in)	14.6 kg (32.2 lbs)	3.4 kg (7.5 lbs)

APXBL06B_43-CT5

APXBL06B_43-AT5

ELECTRICAL SPECIFICATIONS

■ R1

Frequency Range		MHz	698-960		
		MHz	698-806	790-894	880-960
Polarization		---	±45°		
Gain	Over all Tilts	dBi	11.1 ± 1	12 ± 0.1	12 ± 0.1
	Max Gain	dBi	12.1	12.1	12.1
Azimuth Beamwidth (3 dB)		degrees	68.5° ± 1.5°	66.3° ± 1.5°	65.7° ± 1.2°
Elevation Beamwidth (3 dB)		degrees	39.6° ± 2.5°	35.4° ± 1.5°	35.4° ± 0.7°
Electrical Downtilt		degrees	5°		
Impedance		Ohms	50Ω		
VSWR (Return Loss)		---	1.5:1 (-14 dB)		
Passive Intermodulation		dBc	-150 (3rd Order for 2x20 W Carriers)		
Front-to-Back Ratio, Total Power, ± 30°		dB	22.2	23	23
First Upper Side Lobe Suppression		dB	11	12	10.9
Cross-Pol Over Sector		dB	11	10.9	9.7
Cross Polar Discrimination (XPD) at Mechanical Boresight (0°)		dB	22.6	23.4	25.8
Maximum Effective Power Per Port		Watts	350 W		
Cross Polar Isolation		dB	24		
Interband Isolation		dB	24		

ELECTRICAL SPECIFICATIONS

■ Y1

Frequency Range		MHz	1710-2690			
		MHz	1710-1880	1850-1990	1920-2170	2300-2400 2490-2690
Polarization		---	±45°			
Gain	Over all Tilts	dBi	13.1 ± 1	13.4 ± 0.5	13.3 ± 0.5	13.6 ± 0.5 14.5 ± 0.5
	Max Gain	dBi	14.1	13.9	13.8	14.1 15
Azimuth Beamwidth (3 dB)		degrees	66.8° ± 6.5°	66.4° ± 4.2°	66.6° ± 4°	70.2° ± 2.3° 66.2° ± 6.8°
Elevation Beamwidth (3 dB)		degrees	19.2° ± 1°	17.8° ± 0.6°	16.9° ± 1°	14.6° ± 0.8° 13.5° ± 1.6°
Electrical Downtilt		degrees	5°			
Impedance		Ohms	50Ω			
VSWR (Return Loss)		---	1.5:1 (-14 dB)			
Passive Intermodulation		dBc	-150 (3rd Order for 2x20 W Carriers)			
Front-to-Back Ratio, Total Power, ± 30°		dB	20.9	23.3	21.4	18.5 18
First Upper Side Lobe Suppression		dB	14.6	16.1	14	12.3 10.9
Cross-Pol Over Sector		dB	8	9.6	10	11.5 2
Cross Polar Discrimination (XPD) at Mechanical Boresight (0°)		dB	20.8	21.9	21.7	17.6 17.1
Maximum Effective Power Per Port		Watts	250 W			
Cross Polar Isolation		dB	24			
Interband Isolation		dB	24			

Quoted performance parameters are provided to offer typical, peak or range values only and may vary as a result of normal testing, manufacturing and operational conditions. Extreme operational conditions and/or stress on structural supports is beyond our control. Such conditions may result in damage to this product. Improvements to products may be made without notice.

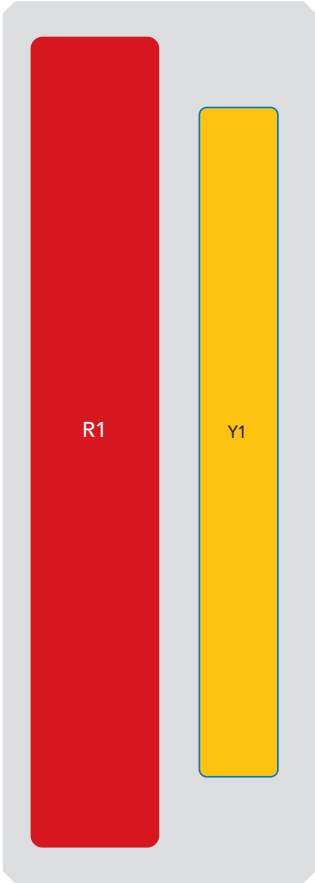
APXBL06B_43-CT5
APXBL06B_43-AT5

BOTTOM VIEW - LABELING



ARRAY LAYOUT

ARRAY	FREQUENCY	CONNECTOR	CONNECTOR TYPE
<div></div> R1	698-960 MHz	1-2	(2x) 4.3-10 Female
<div></div> Y1	1710-2690 MHz	3-4	(2x) 4.3-10 Female



The illustration is not shown to scale.

Quoted performance parameters are provided to offer typical, peak or range values only and may vary as a result of normal testing, manufacturing and operational conditions. Extreme operational conditions and/or stress on structural supports is beyond our control. Such conditions may result in damage to this product. Improvements to products may be made without notice.

APXBL06B_43-CT5

APXBL06B_43-AT5

MECHANICAL SPECIFICATIONS

Length		mm (in)	620 (24.4)
Width		mm (in)	350 (13.8)
Depth		mm (in)	200 (7.9)
Net Weight - Antenna Only		kg (lbs)	8 (17.6)
Wind Load Rated at 150 km/h (93 mph)	Front	N (lbf)	254 (57)
	Side	N (lbf)	136 (31)
	Rear	N (lbf)	140 (31)
Survival Wind Speed / Rated Wind Speed		km/h (mph)	200 (150)
Connector Type		--	(4x) 4.3-10 Female at Bottom
Radome Color		---	Light Grey
Radome Material		---	Fiberglass
Lightning Protection		---	DC Ground
Shipping	Packing Size (Length x Width x Depth)	mm (in)	895 x 445 x 295 (35.2 x 17.5 x 11.6)

ENVIRONMENTAL SPECIFICATIONS

Environmental Standard	---	ETS 300 019
Operating Temperature	degrees	-40° to +60° C (-40° to +140° F)
Product Environmental Compliance	---	Product is RoHS Compliant

APXBL06B_43-CT5

APXBL06B_43-AT5

ACCESSORIES

Accessories may be ordered separately unless otherwise indicated.

ITEM	MODEL NUMBER	WEIGHT
Beam Tilt Mounting Bracket Kit for Pole Diameter 50-110 mm (2.0-4.3 in) <i>Refer to ordering options</i>	APM50-B1	4.5 kg (9.9 lbs)
Direct Pipe No Tilt Bracket Kit for Pole Diameter 50-110 mm (2.0-4.3 in) <i>Refer to ordering options</i>	APM50-B1N	3.4 kg (7.5 lbs)

INSTALLATION

Please read all installation notes before installing product.

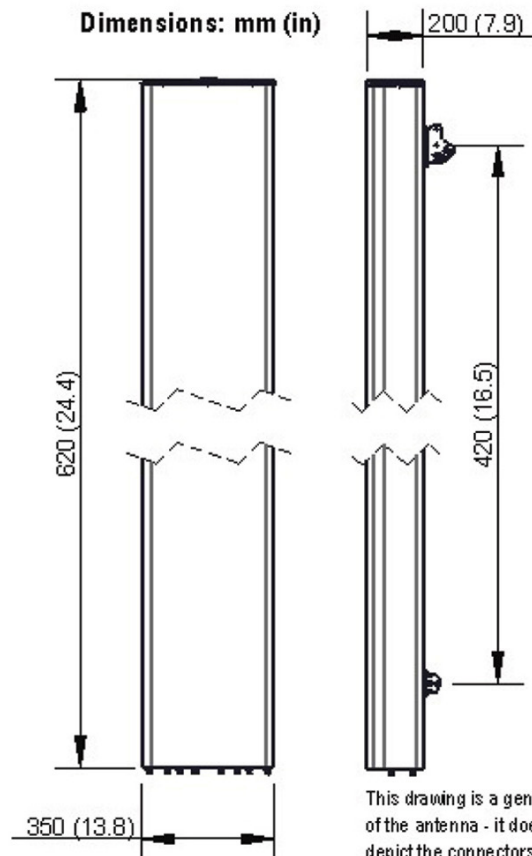


Always attach the antenna using all mounting points.

Do not install antenna with the connectors facing upwards.

EXTERNAL DOCUMENT LINKS

[APM50 Mounting Kit Series Installation Instructions](#)



NOTES

Specifications follow BASTA guidelines.

For additional mounting information, please check **External Document Links**.

For Radiating Patterns: [Request pattern files](#)